



COMPOSITE LICENCE BLOCKS FOR IRON ORE

Near Village- Toda, Kalakota, Ladi Ka Bas
Tehsil Neem Ka Thana, District Sikar

RAJASTHAN STATE MINERAL EXPLORATION TRUST

3rd/5th Floor, Khanij Bhawan, Udhyog Bhawan, C- Scheme, Jaipur - 302005

PH- 8290211477, 9928012308

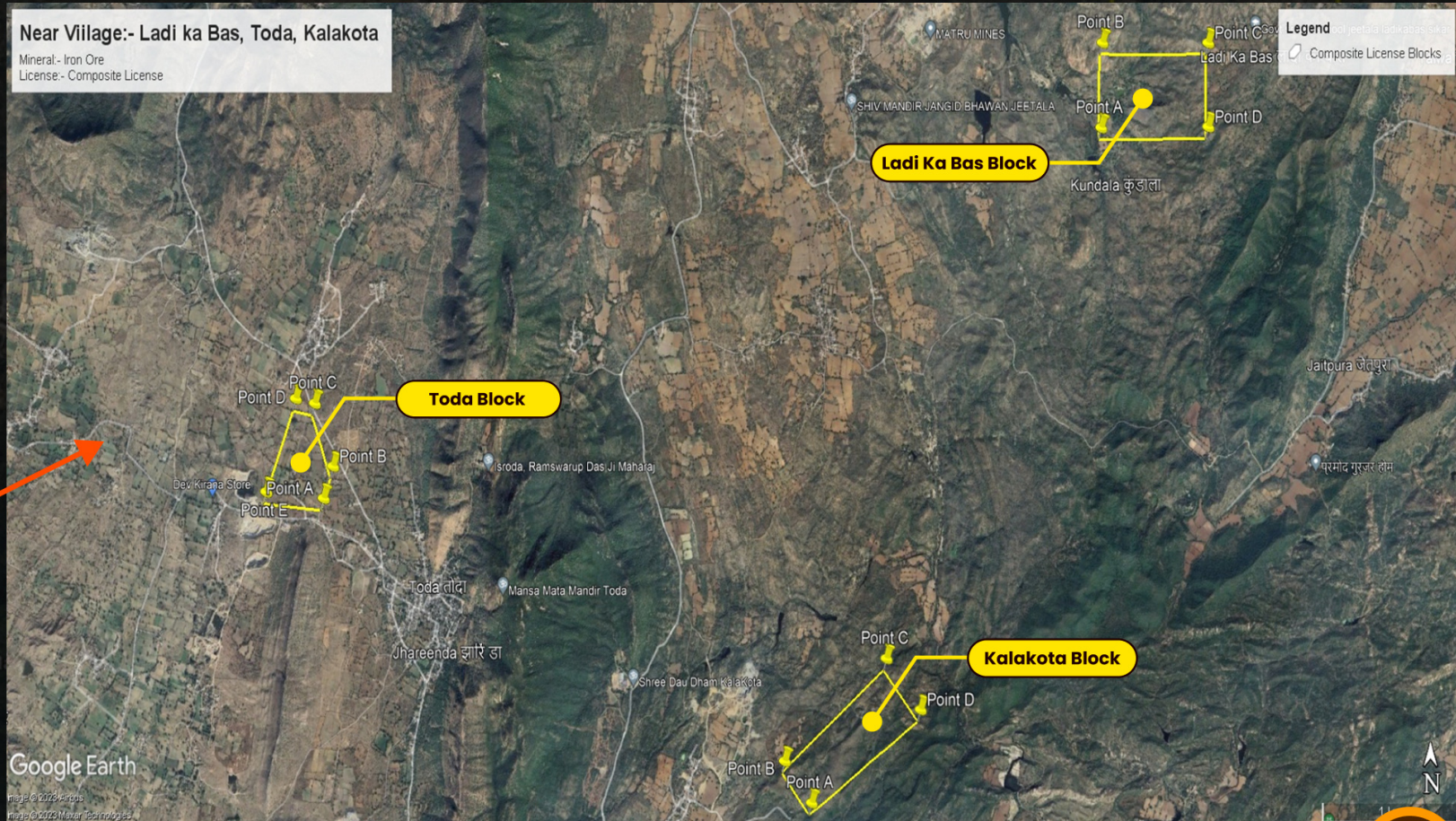
INTRODUCTION

- Mineral
 - Iron Ore
- Block
 - Composite License
- Level Of Exploration
 - G- 4
- Total Area
 - Kalakota- 38.7545 Hect.,
Toda- 17.8501 Hect.,
Ladi Ka Bas- 34.4418 Hect.
- Near Village
 - Kalakota, Ladi Ka Bas, Toda
- Tehsil
 - Neem Ka Thana
- District
 - Sikar (Rajasthan)

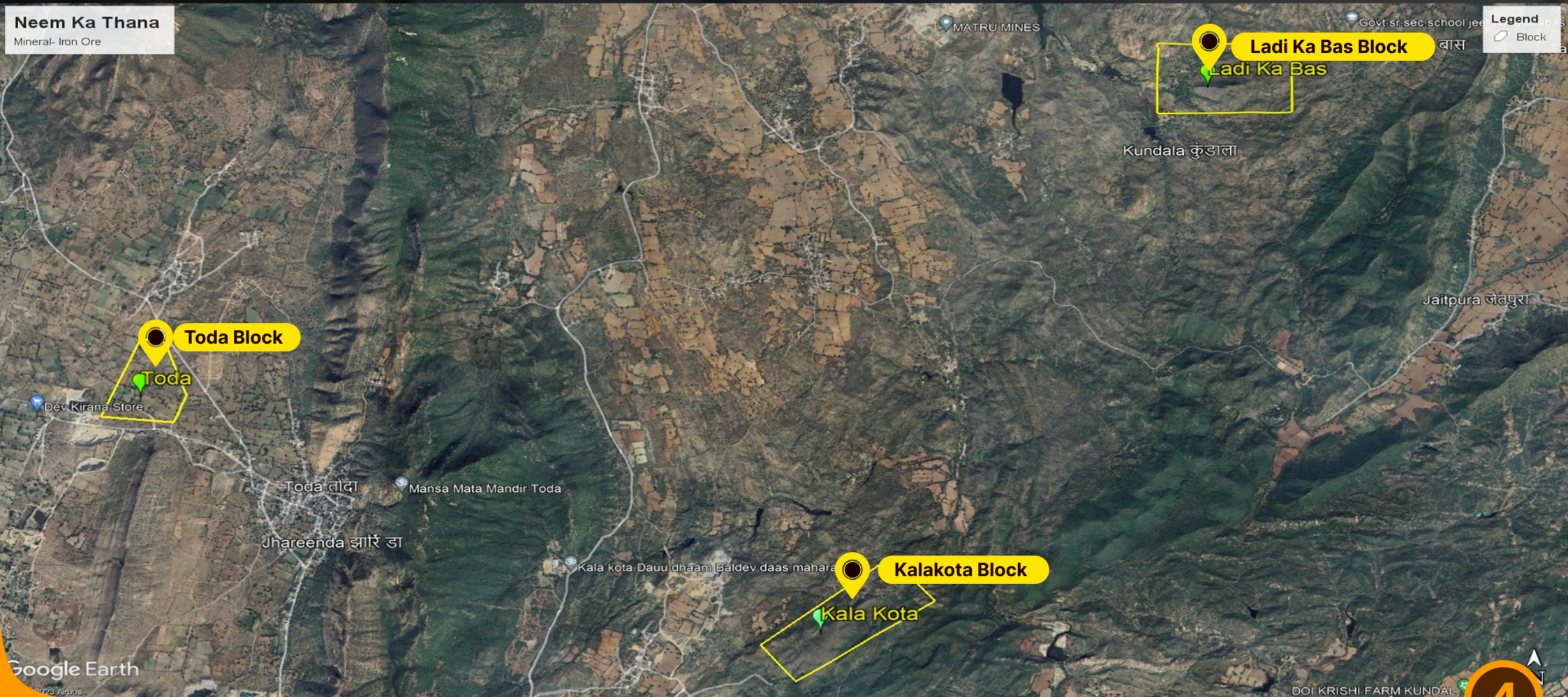
BLOCK LOCATION MAP



Near Village:- Ladi ka Bas, Toda, Kalakota
Mineral - Iron Ore
License - Composite License



COMPOSITE LICENSE BLOCKS



BOUNDARY DETAIL OF BLOCKS

BLOCK	POINTS	LATITUDE	LONGITUDE	Area (in Hectares)	Near Village, Tehsil	Iron Ore Resources (in Million Tonnes)
Kalakota	A	27°37'48.81188"	75°56'38.99556"	38.7545	Kalakota Tehsil- Neem ka Thana	3.9
	B	27°37'57.07829"	75°56'31.85753"			
	C	27°38'16.57974"	75°56'59.32542"			
	D	27°38'06.61968"	75°57'08.24003"			
Toda	A	27°38'47.71200"	75°54'28.41300"	17.8501	Toda Tehsil- Neem ka Thana	1.8
	B	27°38'53.90700"	75°54'30.89300"			
	C	27°39'06.05300"	75°54'25.97100"			
	D	27°39'06.97200"	75°54'20.92200"			
	E	27°39'00.09872"	75°54'17.93516"			
	F	27°38'59.47869"	75°54'19.34242"			
	G	27°38'58.48068"	75°54'18.90275"			
	H	27°38'58.21966"	75°54'19.64992"			
	I	27°38'56.31436"	75°54'18.81054"			
	J	27°38'56.90459"	75°54'16.54668"			
	K	27°38'48.94100"	75°54'13.08400"			
Ladi ka Bas	A	27°39'59.99874"	75°57'55.40945"	34.4418	Ladi ka Bas Tehsil- Neem ka Thana	8.7
	B	27°40'16.33911"	75°57'55.55306"			
	C	27°40'16.14244"	75°58'23.66577"			
	D	27°39'59.80209"	75°58'23.52099"			

GEOLOGY

1

The geological setting of the lithounits comes under Ajabgargh group of Delhi Super Group.

2

The area is mostly covered is represented Quartzite & Mica Schist of Ajabgargh group of Delhi super group.

3

Pegmatites with quartz veins intrude these Ajabgargh group of rock.

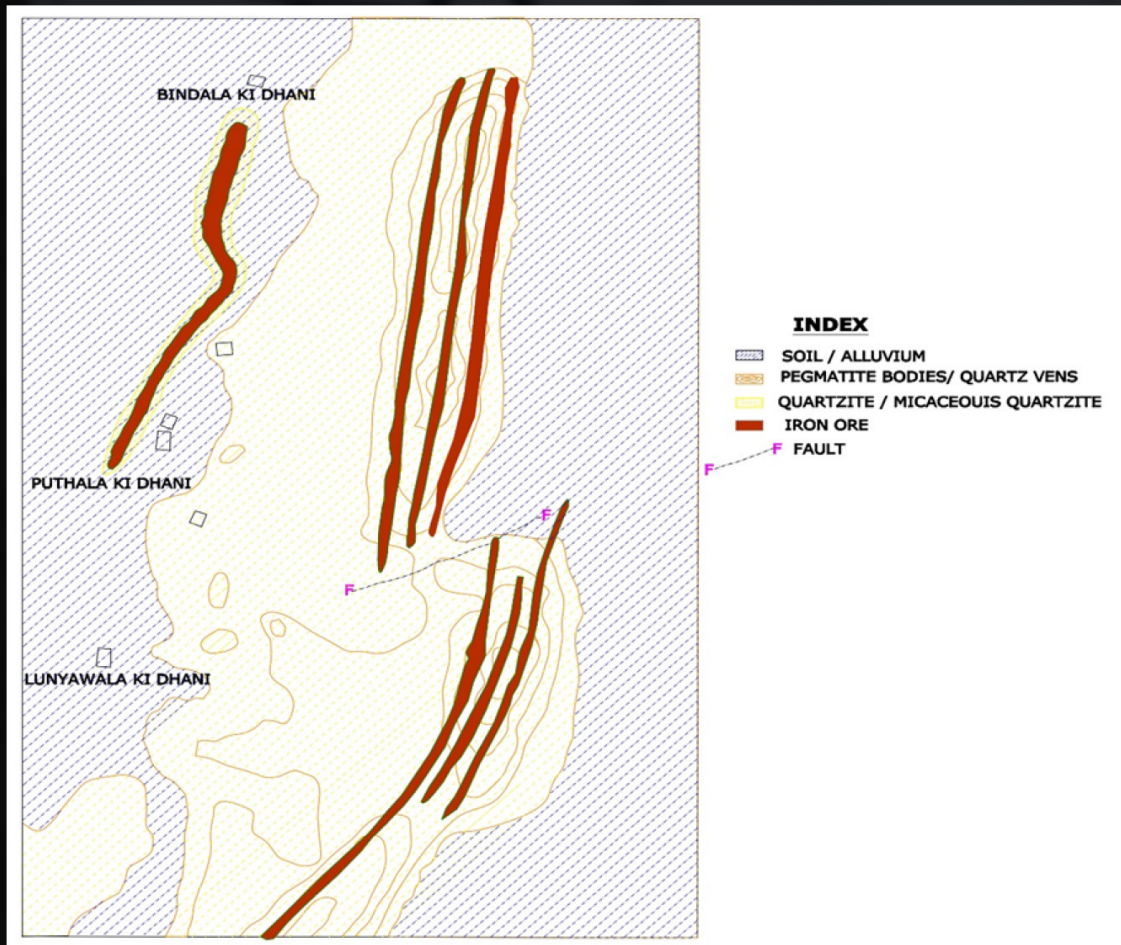
4

Even though the terrain is hilly in the west and has low lying areas in the east that are covered with sand.

5

The host rock is quartzite and iron ore has been concentrated at place as bands with variable thickness. The three bands of iron ore are exist within the area

GEOLOGICAL MAP OF THE AREA



EXPLORATION

DMG, Rajasthan initiated geological investigation of the area in 1969 and reported indications of mineralization.

Area has been explored under Reconnaissance Survey from year 1969 to 2005-06 under Ferrous Metal Exploration Program of DMG, Rajasthan.

Three iron ore bands have been observed in the area, having tentative length of 2000 to 2500 meters. In the block areas, iron ore bands are exposed at multiple location having exposed length of 200 to 220 meters and width of 6 to 25 meters.

During reconnaissance survey, pit and spot samples were collected and analyzed for Iron ore. Exploration done in the area is of G-4 level of UNFC. In the block areas Iron ore shows good value of Fe_2O_3 51.50% to 96.28% and Fe 35% to 70%.

FEATURES : IRON ORE BANDS



RESOURCES

1

Kalakota Block

Mineralised area for the CL block is 9 hectare. Estimated mineral resource of the CL block is 3.9 million tones.

2

Ladi ka Bas Block

Mineralised area for the CL block is 20 hectare. Estimated mineral resource of the CL block is 8.7 million tones

3

Toda Block

Mineralised area for the CL block is 4.1 hectare. Estimated mineral resource of the CL block is 1.8 million tones.

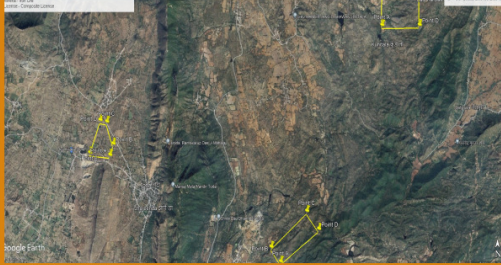
Resources of composite license blocks has been calculated on basis of nearby Nyorana-Dhandhela Mining Lease Block. Estimated resources of the blocks are of G4 level as per UNFC.

NEARBY MINING LEASE BLOCK



FEATURES OF BLOCK: INFRASTRUCTURE & CONNECTIVITY

Block areas are 32 kilometers far from Neem ka Thana Tehsil of Sikar and 115 kilometers far from Sikar district.



The CL block areas are connected by roads moterale roads to Kotputli and further to Jaipur-Delhi National Highway.



The nearest Railway Station is Neem ka thana about 32 km far from block areas.



The nearest airport is (JIA) Jaipur 142 km far from block areas.



FEATURES OF BLOCK: INFRASTRUCTURE



Most of the infrastructure that is Police Station, Bank Facility, Hospital, Workshop Facility, Bus Stand, etc. are available in Neem ka Thana and Sikar City.

COMPOSITE LICENSE- BRIEF

**Purchase of Tender Document from MSTC
(<https://www.mstcindia.co.in>)**

Applying Technical and Financial Bid (IPO)

Ascending e-Auction concluding preferred bidder

Grant of Composite License

Announcement of successful bidder

Submission of Performance Security and requisite approvals

COMPOSITE LICENSE TO MINING LEASE

**APPLICATION FOR
MINING LEASE
(ACCOMPANIED
WITH PROSPECTING
REPORT, UPFRONT
PAYMENT,
PERFORMANCE
SECURITY)**

**GRANT- LETTER
OF INTENT (LOI)**

**REQUISITE
APPROVALS AND
CLEARANCES**

MDPA EXECUTION

**GRANT OF
MINING LEASE**



THANK YOU

RAJASTHAN STATE MINERAL EXPLORATION TRUST

3rd/5th Floor, Khanij Bhawan, Udhyog Bhawan, C- Scheme, Jaipur – 302005

PH- 8290211477, 9928012308