

# COMPOSITE LICENSE BLOCK FOR LIMESTONE

RAJASTHAN STATE MINERAL EXPLORATION TRUST

3rd/5th Floor, Khanij Bhawan, Udhyog Bhawan, C- Scheme, Jaipur - 302005

PH- 8290211477, 9928012308

# INTRODUCTION

- Mineral - Limestone
- Block - Composite License
- Level of Exploration - G-4
- Block area - 1.4 Sq. Km.
- Near village - Parthipura
- Tehsil - Garhi
- District - Banswara (Rajasthan)



# BLOCK COORDINATES

POINT	LATITUDE	LONGITUDE
A	N23°35'04.8464"	E74°15'35.2626"
B	N23°34'00.1037"	E74°15'45.1526"
C	N23°33'57.0099"	E74°15'28.9224"
D	N23°34'14.9669"	E74°15'21.7620"
F	N23°34'32.6282"	E74°15'21.7620"
G	N23°34'32.6282"	E74°15'14.7159"
H	N23°35'04.8464"	E74°15'01.8987"

# BLOCK LOCATION MAP



गमनवाला, यन्त्र टिब्बा, रामगढ़ )

- स्टील ग्रेड लाइम स्टोन

सेण्डु स्टोन  
( चंसी पहाड़ )  
लाल पत्थर

घोलपुर  
स्टोन

- केमिकल ग्रेड चूना पत्थर  
- नमक ( फलोदी )

- ग्रेफाइट  
- फेल्सपार  
- कर्मोक्व लाइट  
- येन्नेसाइट  
- क्वाटर्ज

- सिलिका रेत

# FEATURES OF BLOCK: INFRASTRUCTURE & CONNECTIVITY



The Parthipura block area is **23 KM** from Banswara district in Rajasthan.



The Parthipura block is well connected by roads.



The nearest Railhead is Ratlam Junction about **76 KM** from Parthipura block.



The nearest Airport is Dabok (Udaipur) about **170 KM** from block.

# FEATURES OF BLOCK: INFRASTRUCTURE



Most of the infrastructure i.e. Police station, Bank facility, Hospital, workshop facility, Busstand etc. are available nearby.

# LAND CLASSIFICATION OF BLOCK



Land Status:- Most of the block area falls under forest land and rest is private land.

# GEOLOGY

- Geologically, the area comprises Phyllite, Schist, Quartzite, Limestone and Dolomite belonging to Kalinjara formation of Lunawada group of Aravalli Supergroup intruded by Amphibolite and minor Quartz vein.

- Limestone exposures are undulating terrain and extending more than 3.5 KM strike length and width varies from 100m to 1000m
- It is pink, grey to cream-color, medium-grained, closely fractured trending NW-SE to NNW-SSE dipping steep North-Easterly to vertical, occasionally reverse due to local folding.
- NNW-SSE to NW-SE dipping 60°-85° due NE at places reverse due to local folding.

- In the southern continuity it is bifurcating into Eastern and Western parts, divided by Quartzite and Dolomite.
- The Limestone exposed is crystalline in nature light pink/grey white fine to medium-grained, hard & compact, fractured, jointed, at some places friable in nature.



# EXPLORATION

This block area was explored at G-4 level by Mines & Geology Department, Rajasthan.

## During the period 1985-87, exploration work as under-

- Reconnaissance survey- 75 Sq. Km.
- Regional geological mapping- 47 Sq. Km.
- Detailed geological mapping- 1.95 Sq. Km.
- 14 no. of boreholes, total drilling 402.95m
- Chip sampling- 270 nos.
- Channel sampling- 64 nos.
- Cement grade limestone deposit having moderate to good quality of limestone.

## Exploration done in the area thereafter as under-

- Area of geological survey- Kushalpura, Bhimkund
- Exploration area is covered under- N23<sup>0</sup>30'00"- N23<sup>0</sup>37'00" E74<sup>0</sup>13'00"- E75<sup>0</sup>20'00"
- Regional and detailed geological mapping were done during exploration.
- Findings of project- Two limestone bands have been found in area. One is 50 to 400 meter wide and another is 50 to 100 meter wide, goes upto 200 meter wide near Parthipura village.
- Limestone found is Coarse grained and colour varies from Dark grey to Medium grey and White to Pink.
- Limestone bands in area are lying NW-SE with steep dipping towards SW or NE.
- Limestone varies in area having CaO 44 to 54% with low Silica.

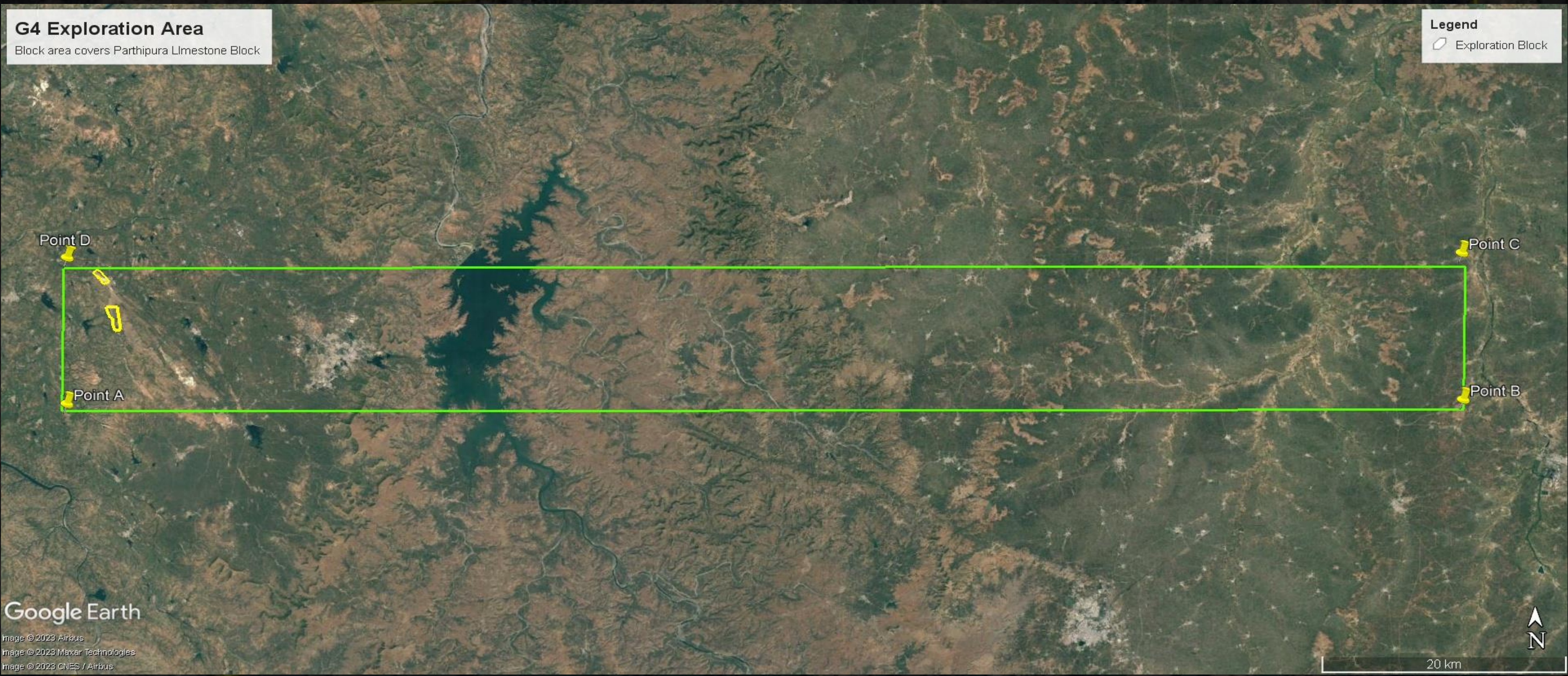
# EXPLORATION DONE IN AREA

- Nearby to this Composite License block area, two scout boreholes, each having inclined depth of **165 meters with true vertical depth 140 meters.**
- Limestone encountered all along the depth of boreholes.

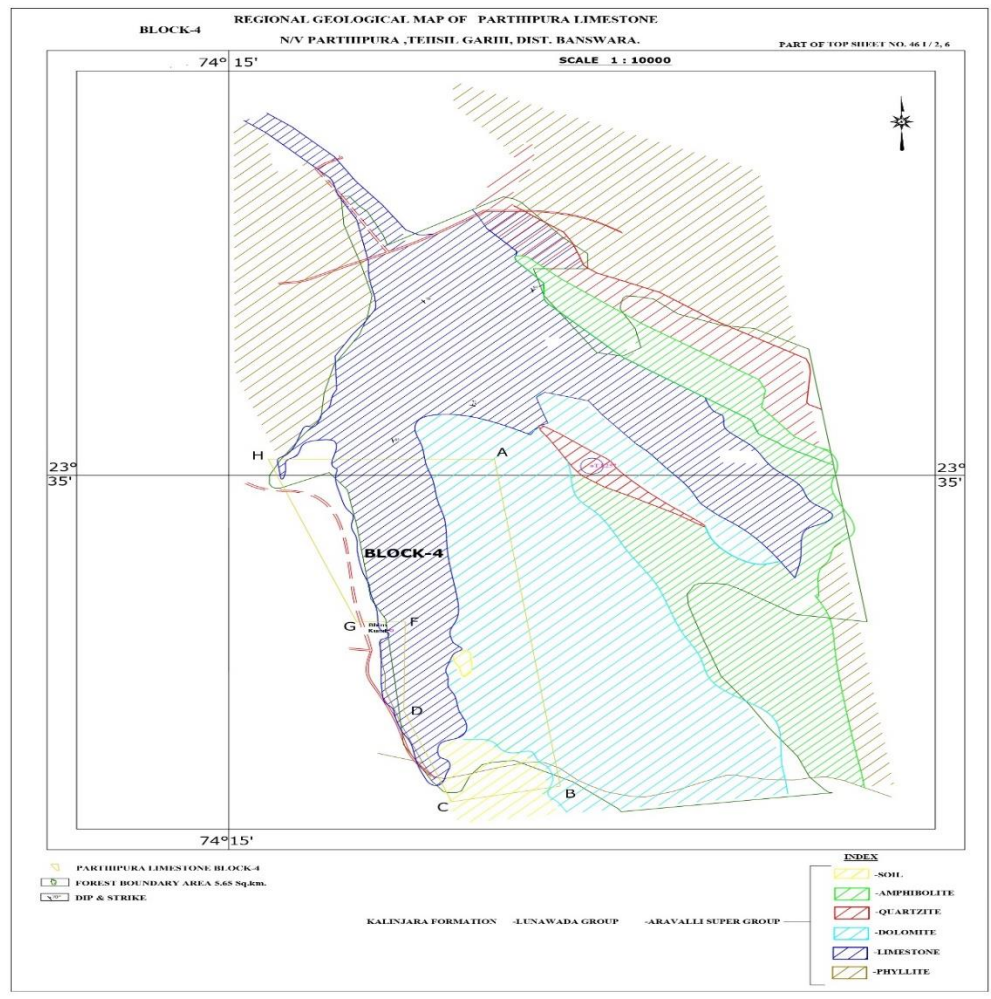
# EXPLORATION

**G4 Exploration Area**  
Block area covers Parthipura Limestone Block

**Legend**  
Exploration Block

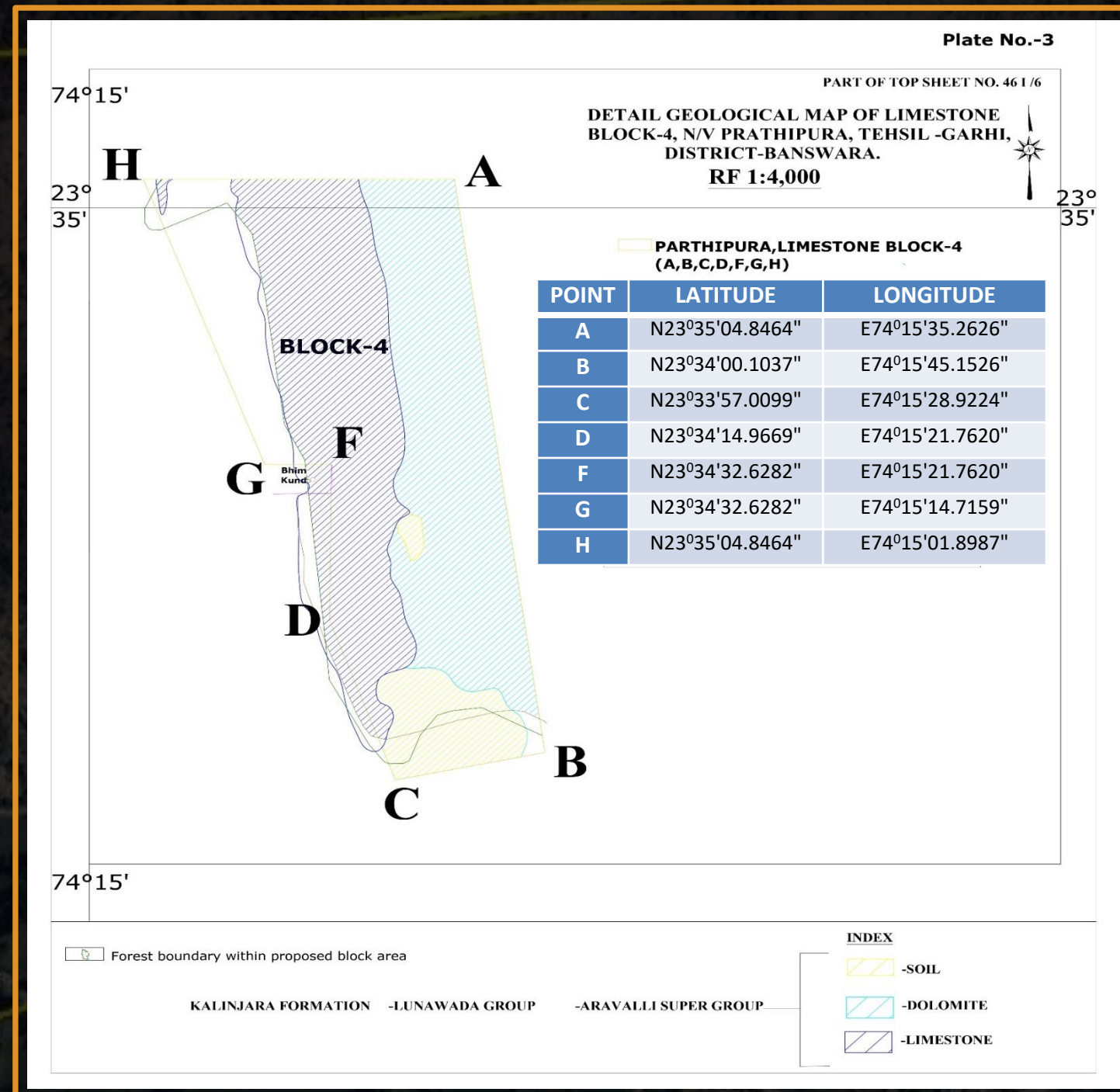


# EXPLORATION



मिनाडी केन्द्र के डाटा प्रदर्श

# EXPLORATION



# RESOURCES



**190.5 million tonnes** of cement grade limestone estimated in block.



Estimated resources of the block are of **G4 level** as per **UNFC**.

Bhimkund

GSSS GIBRATALI

# FEATURES: LIMESTONE



भारत केन्द्र के 131 प्रती



# NEARBY LEASE- PARTHIPURA LIMESTONE MINE

- » Mining Lease No.- 01/1993 M/s India Cements Limited
- » Mineral- Limestone (Cement Grade)
- » Lease area- 65.82 Hectare
- » Reserves as per mining plan- 86.990 million tonnes (Balance as on 01.10.2020) having CaO-41.33 to 53.08 %, MgO- 0.33 to 1.55 %, SiO<sub>2</sub>-5.69 to 17.58%.
- » End use of mineral- Captive cement plant in vicinity of mining lease.
- » Plant capacity- 1.80 million ton per annum of Cement



# NEARBY LEASE- M/S TRINETRA CEMENT LTD.



# NEARBY LEASE- M/S TRINETRA CEMENTS LTD.



# COMPOSITE LICENSE- BRIEF

Purchase of Tender Document from MSTC (<https://www.mstcindia.co.in>)

Applying Technical and Financial Bid (IPO)

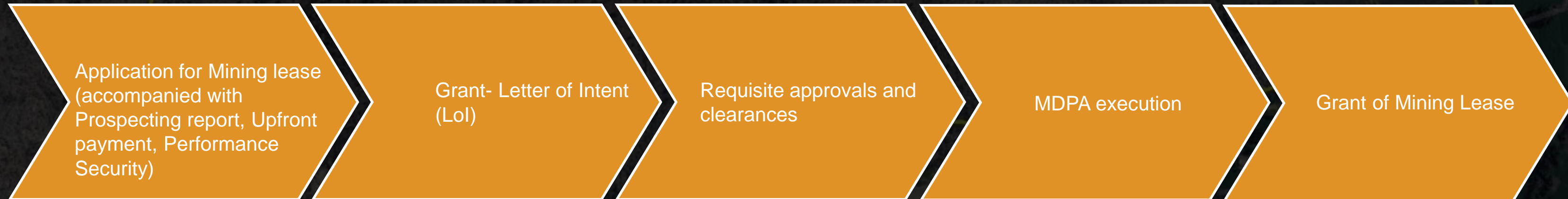
Ascending e-Auction concluding preferred bidder

Submission of Performance Security and requisite approvals

Announcement of successful bidder

Grant of Composite License

# COMPOSITE LICENSE TO MINING LEASE





# Thanks

RAJASTHAN STATE MINERAL EXPLORATION TRUST  
3rd/5th Floor, Khanij Bhawan, Udhyog Bhawan, C- Scheme, Jaipur - 302005  
PH- 8290211477, 9928012308